

TWIN FLAP VENTILATOR FOR SMOKE EVACUATION AND DAILY NATURAL VENTILATION



ACCORDING TO STANDARD

EN 12101-2



TWIN FLAP VENTILATOR

The **TECRESA DVP** model is a twin flap ventilator. It has been designed to evacuate large volumes of smoke in case of fire, maintaining high thermal insulation performance.

MATERIALS

We can differentiate and select two elements in this ventilator: base and flaps, according to our needs. **The base** can be supplied **WITH** or **WITHOUT** insulation.

Insulation available: **20 or 40 mm.**

AL: ALUMINIUM.

ST: GALVANISED STEEL.

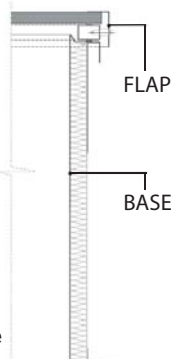
Coupling flanges.

The **flaps are manufactured as standard** in the following options:

AL: Aluminium flap.

AL-XPS: Aluminium flap with isolation from 20 or 40 mm.

PCA: Transparent or translucent polycarbonate from 10 to 25 mm.



DECK roof type

Pannel roof type

This is the ideal vent when it comes to horizontal or leaning installation, as it perfectly adapts to both DECK roof type and panel roof type.

DVP

TWIN FLAP VENTILATOR FOR SMOKE EXHAUST AND DAILY NATURAL VENTILATION



DIMENSIONS

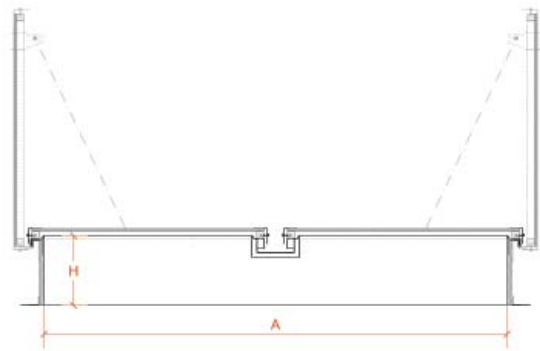
Available dimensions:

HEIGHT: from 15 to 50 cm.

WIDTH: from 120 to 250 cm.

LENGTH: from 160 to 300 cm.

Installation **ANGLE:** 0° - 30°



SECURITY

The **Tecresa DVP** vent is supplied with a security system that includes a secondary power source and an activation device consisting in a fuse element tared between 57 and 260 °C according to project requirements.



OPENING SYSTEM

Opening system for smoke exhaust can be selected from the following:

- **PNEUMATIC:** Double acting cylinders.
- **ELECTRIC:** Electric motors 24 V DC.



ADVANTAGES

- High capacity of smoke exhaust
- High capacity of thermal insulation
- High lighting capacity
- Possibly to be installed on DECK roof type