



DESCRIPTION

The **Plane Lighting Cover Tecsel®** is a highly compressible intumescent material which expands to form a resilient and stable char.

TEST

- | | |
|-----------------|-------------------|
| ■ F68962/208217 | ■ 311120 |
| ■ IF 10042 | ■ TE 94667 |
| ■ IF 10047 | ■ 311120/35 99 FR |
| ■ RF 08071 | ■ 318524 |

KEY FEATURES & CUSTOMER BENEFITS

- Maintains the fire protection performance of the ceiling - preventing or delaying the spread of fire.
- Simple fixing method from above or below the ceiling - can be fitted through the diagonal in the ceiling grid, or folded for tight ceiling spaces.
- Provides thermal and acoustic insulation.
- Lightweight at only 1.5 - 2.5 kg.
- No screws, drilling or support required - saves money.
- Available in sizes to fit a range of 600 x 600 mm and 1,200 x 600 mm fittings.
- Restores and maintains the integrity of 30 and 60 minute fire rated ceilings.
- Cost effective.

HEALTH AND SAFETY

The following considerations must be taken into account when handling **Plane Lighting Cover Tecsel®**:

- Wearing protective gloves to protect the hands is recommended.
- Wearing tight goggles to protect the eyes is recommended.



STORAGE

Keep in a dry and well ventilated place.

Consult the safety datasheet for further information.



APPLICATION AND USE

The **Tecsel® Plane Lighting Cover** has been developed to provide maximum protection for ceilings where fire resistant tiles have been replaced by light fittings. The cover is supplied ready to fit and no assembly is required. In fire situation, the cover prevents the fire from penetrating the ceiling.

The cover also gives additional insulation protection to the ceiling void reducing the chance of ignition of accumulated dust and insulation..

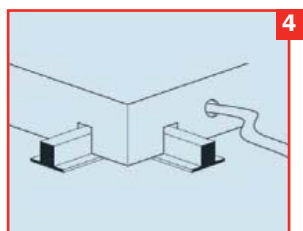
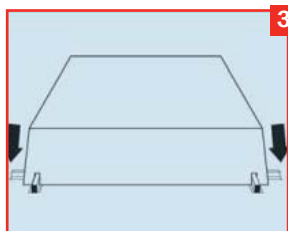
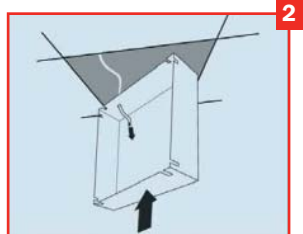
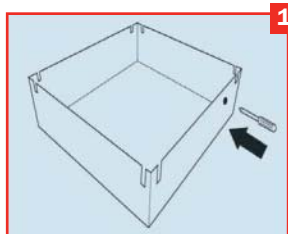
With the cover in place, the modular light fitting can be installed as normal. The cover requires no maintenance and is easy to remove for maintenance of the light fitting.

The **Plane Lighting Cover Tecsel®** are widely used in public and commercial buildings. The ceilings are subject to fire regulations and most will have to be fire rated. When a ceiling tile is replaced by a recessed luminaire, the integrity of the ceiling and its fire performance are reduced significantly.

To combat this, **mercortecresa®**, as part of its continuing development of passive fire protection solutions, has developed a **Plane Lighting Cover Tecsel®** for use in 30 and 60 minute fire rated ceilings

FITTINGS INSTRUCTION

The design allows the cover to fit a wide range of both 600 x 600 mm and 1.200 x 600 mm fittings with heights of up to 135 mm from the base of the ceiling cross tee.



- 1** Pierce suitable holes in cover for cables to pass through. Note: Cables should be a tight fit.
- 2** Pass cover diagonally through ceiling opening, or fold if the space is tight.
- 3** Ensure cover slots are located over ceiling grid and cover sits flush with ceiling tiles.
- 4** Pass cables through pre-made holes and fit light fitting as normal. Transformers should be sited outside the cover.