

NON-STRUCTURAL ELEMENTS. WALLS.

Non-structural walls, which separate fire areas, should be fire resistant as stipulated in standard EN 1364-1.

When in fire resistance tests for non-structural elements one edge is left free (Part 1: Walls), the standard allows increasing the width.

With regard to increasing the height, the standard is clear and precise. When the test is run at least at 3 metres high, it may be increased up to 4 metres.

Very often, internal partitions are higher than 4 metres. **Mercor tecresa**® have been the first to develop large partitions and offers the most efficient and convenient solution for this type of works.

Besides, penetrations produced between different fire sectors must be sealed off; for example, in the case of services crossing. Check the **TECSEL**® **Sealing System** catalogue to find the most suitable solution.

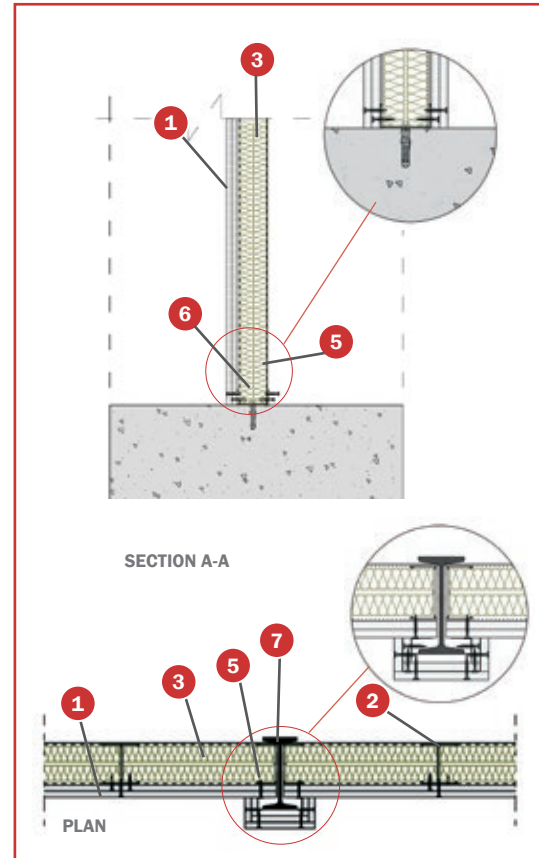
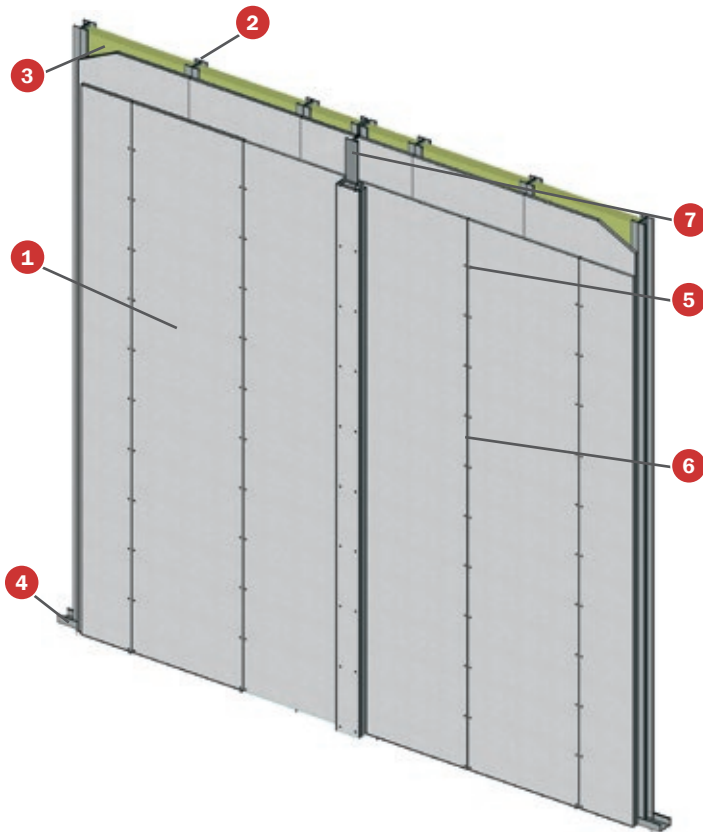
TECBOR® BOARDS

CONSTRUCTIVE SOLUTIONS

TECBOR® BOARDS

NON-STRUCTURAL ELEMENTS. WALLS

TECBOR® EI-120 INDEPENDENT WALL LINING



TEST

Standard: UNE EN 1364-1

Laboratory: TECNALIA

Test No: 072951-006-1/2

SOLUTION

- 1 Tecbor® 12 mm boards.
- 2 70x36x0,6 mm H-shaped stud.
- 3 80 mm (40+40) and 40 Kg/m³ density rock wool.
- 4 73x30x0,5 mm metal runner.
- 5 3,5x35 mm self-tapping screw.
- 6 Tecbor® joint paste or Tecbor® Bonding Compound.
- 7 IPN 140 metal profile.
- 8 30x30x0,6 mm angle.
- 9 M6 metal plug.

DESCRIPTION OF ASSEMBLY

Fix 73x30x0.5 mm runners and assemble the 70x36x0,6 mm studs every 610 mm.

Place 80 mm rock wool panels between studs. Then fix the two layers of Tecbor® 12 mm boards to both sides with 3.5x35 mm self-tapping screws every 200-250 mm, overlapping boards of each layer.

Finally, cover board joints and screw heads with Tecbor® joint paste or Tecbor® Bonding Compound.